

AP1L



Premium High End EDM Machine

- 10 year warranty on positioning accuracy
- Linear motor (X/Y/Z axis)
- Linear scale (X/Y/Z axis)
- Ceramic components
- Linear motor cooling unit
- Dielectric fluid cooling unit
- SVC circuit
- "SGF" Nano-Wear Discharge Unit
- Improved Ease of Operation
- NC operation panel
- Remote controller
- LN assist software for optimum condition search
- Q³vic EDM
- Rise and fall work tank
- Clamping chuck
- RS232C + LAN
- Totalising hour metre
- Work light control

Technical Specifications

X/Y/Z axis travel (mm)	200 x 120 x 200
Ceramic table dimensions (mm)	360 x 220
Worktank dimensions (mm)	503 x 349 x 250
Dielectric level (min ~ max, mm)	80 ~ 200
Max. workpiece weight (kg)	25
Max. electrode weight (kg)	5
Distance from floor to table top (mm)	940
Machine tool dimensions (W x D x H mm, Incl. power supply and dielectric tank)	1355 x 1895 x 2030
Step resolution (mm)	0.0001
Machine weight (kg)	3100
Controlled axis	4
Air pressure (Automatic Clamping chuck, MPa)	0.65

Dielectric tank

External dimensions (W x D x H, mm)	1095 x 435 x 785
Weight (empty, kg)	100
Dielectric fluid	Oil
Capacity (l)	120
Filtration method	Replaceable paper filter (MF-1530P)

C Axis (optional)

Resolution	0.00034°
Rotational speed (min ~ max rpm, continuous)	1 ~ 2.000

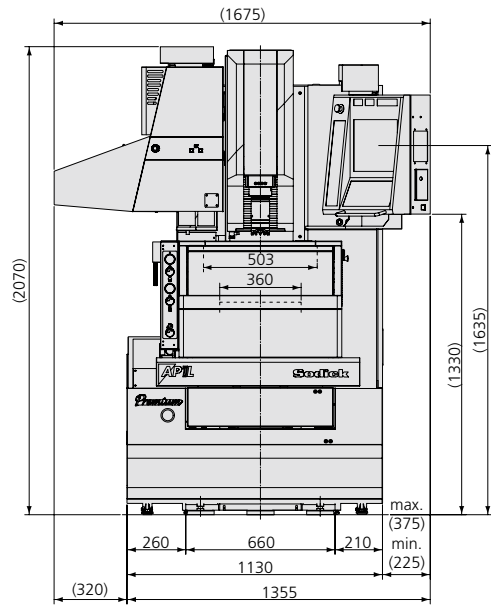
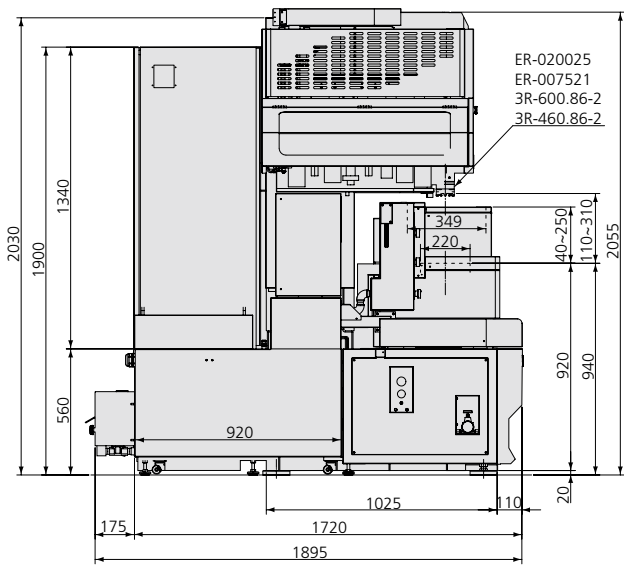
Options

Oscilloscope	Automatic tool changer (ATC)
Active Power Restart (UPS)	Automation System: work piece changer, electrode and robots
High Precision Rotary Head	Custom colour



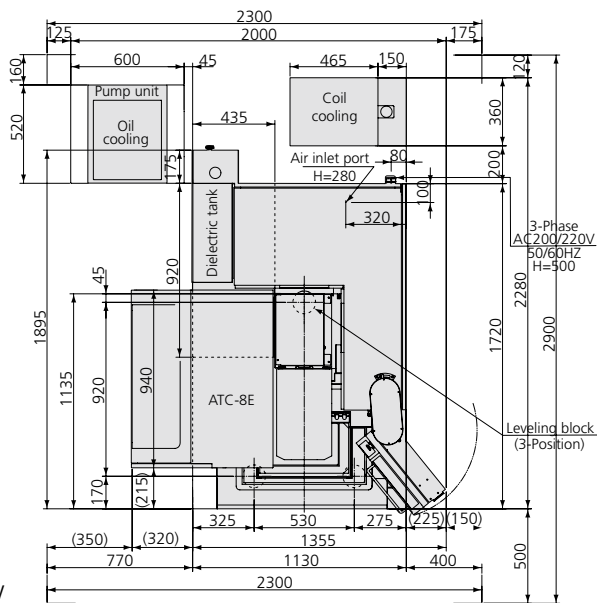
Side View

Front View



Top View

Work Table



Sodick

create your future

Sodick Europe Ltd.

Rowley Drive, Baginton
Coventry, CV3 4LS
United Kingdom

Phone +44 (0) 24 7621 4314
Fax +44 (0) 24 7630 5680

Sodick Contact

email europe@sodick.eu.com
online www.sodick.org