

Product Range

5TH GENERATION LINEAR EDM



Wire Cut EDM

VZ300L | VZ500L
AG400L | AG600L
AQ750L | AQ900L | AQ1200L
AP250L



Die Sinker EDM

AG40L | AG60L
AG80L | AG100L
AD & AQ Series | AQ15L
AP1L | AP3L



High Speed Milling Centre

HS430L | HS650L
HS650L 5-axis



Small Hole Drilling EDM

K1C | K3HN



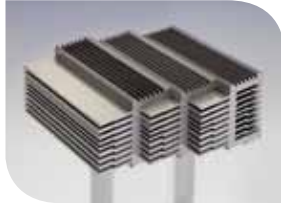
Sodick

Nano&Solution

Precision Wire Cut EDM

Sodick offers a full range of wire EDM; from small ultra-high precision to XXL size machine. Regardless of its size, all the Sodick wire EDM range comes with linear motors on 4 axes and ceramic components as standard to ensure the highest cutting performance and operation which customers would expect from Sodick.

Linear High Speed Wire Cut EDM AG400L | AG600L



AG400L



AG600L

Sodick AG wire series is the best selling range of wire-cut EDM, offering the best performance thanks to the highest technologies in the market.

Linear Entry Size Wire Cut EDM AQ750L | AQ900L | AQ1200L



AQ1200L



AQ750L | AQ900L

Large size wire-cut EDM range, the AQ Series is available in Sodick product range. The machine comes with all the technical features of Sodick.

Linear Entry Wire Cut EDM VZ300L | VZ500L



VZ300L



VZ500L

Sodick offers the VZ300L and VZ500L as entry in the Linear wire EDM market. The VZ range, regardless of its entry price, is equipped with linear motors and a 10-year accuracy guarantee as standard. The machine achieves outstanding levels of accuracy and cutting speeds comparable to High End Sodick EDM models.

Specification	VZ300L	VZ500L	AG400L	AG600L	AQ750L	AQ900L	AQ1200L
X/Y/Z axis travel (mm)	350 x 250 x 220	500 x 350 x 250	400 x 300 x 250	600 x 400 x 350**	750 x 500 x 400***	900 x 600 x 400	1200 x 800 x 400***
U/V axis travel	80 x 80	80 x 80	120 x 120	120 x 120	770 x 520	920 x 620	1220 x 820
Taper angle (Option)	±15° (±45°)	±15° (±45°)	±25° (±45°)	±25° (±45°)	±30° (±45°)	±30° (±45°)	±30° (±45°)
Wire diameter (mm)	Ø0.15~Ø0.30	Ø0.15~0.3	ø0.10 - 0.30*	ø0.10 - 0.30*	Ø0.15~Ø0.33	Ø0.15~Ø0.33	Ø0.15~Ø0.33
Max. workpiece weight	500 kg	850 kg	500 kg	1000 kg	3000 kg	3000 kg	4000 kg
Max. workpiece dimensions (mm)	780 x 570 x 215	960 x 670 x 245	600 x 470 x 240	800 x 570 x 340	1050 x 750 x 400	1200 x 900 x 400	1600 x 1200 x 400
Machine tool dimensions (mm)	1895 x 2180 x 1960	2300 x 2590 x 2040	2240 x 2395 x 2220	2615 x 2760 x 2390	2100 x 2860 x 2390	2380 x 3330 x 2395	4100 x 3935 x 2510

* 0.05mm and 0.07mm wire available as an option | ** Cutting height of Z 500 mm submerged available on AG600L as an option

*** Cutting height of Z 600 mm submerged is available on AQ750L and AQ1200L

Precision Die Sinking EDM

The entire Sodick die-sinking EDM range also features linear motors on 3 axes. The "SGF Plus" generator which realizes "Nano-Wear" with Graphite and Copper electrodes are available as standard.

AG Series AG40L | AG60L



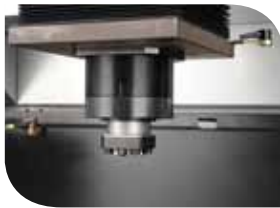
AG40L



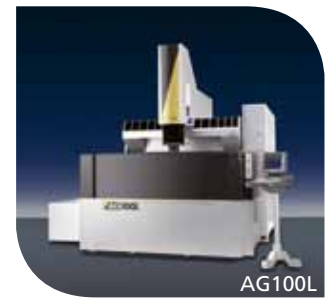
AG60L

Sodick's best selling Die sinker EDM range "AG series" ensures the high speed and accurate operation while reducing the electrode wear.

AG Series AG80L | AG80L LST | AG100L



AG80L LST



AG100L

The larger models in the AG Die sinker EDM range are now available. They all come with the latest in-house made technology from Sodick as standard.

Ultra Large size EDM AQ15L



AQ15L

Linear Entry EDM AD30L | AQ45L



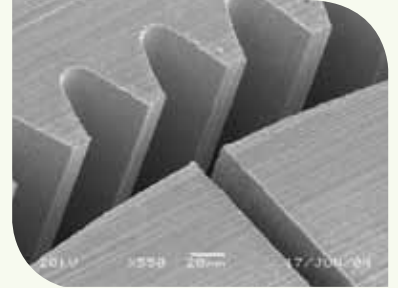
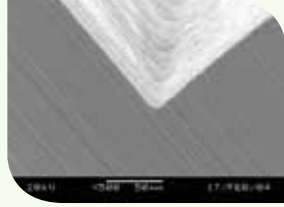
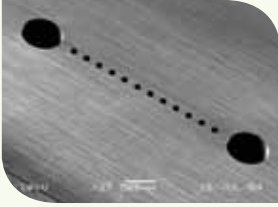
AD30L

Specification	AD30L	AQ45L	AG40L	AG60L	AG80L	AG100L	AQ15L
X/Y/Z axis travel (mm)	320 x 200 x 250	450 x 300 x 320	400 x 300 x 270	600 x 420 x 370	850 x 520 x 420	1200 x 650 x 500	900 x 1500(+500) x 600
Table dimensions (mm)	600 x 400	650 x 450	600 x 400	750 x 550	1100 x 700	1600 x 1000	1000 x 2000
Worktank dimensions (mm)	895 x 584 x 288	800 x 632 x 320	750 x 620 x 350	950 x 740 x 450	1400 x 950 x 500*	2100 x 1250 x 650	1400 x 2500 x 800
Max. workpiece weight	550 kg	800 kg	550 kg	1500 kg	3000 kg	5000 kg	10000 kg
Max. electrode weight	50 kg	80 kg	50 kg	50 kg	100 kg	100 kg	100 kg
Machine tool dimensions (mm)	2239 x 2248 x 2345	1800 x 2193 x 2460	1662 x 2490 x 2330	1852 x 2825 x 2570	2060 x 3195 x 2900	3820 x 4200 x 3340	3050 x 5180 x 4220

*LST (Large Size Tank) available on request.

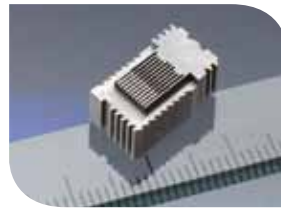
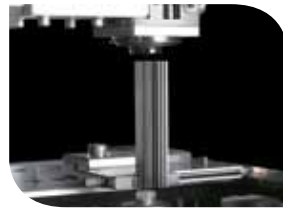
Pioneer of Nano Technologies

All the unique and innovative in-house made technologies enabled Sodick to become the world leader of Nano Machining field. Sodick has developed EDM and High Speed Milling Centers which can achieve the accuracy at nano level.



High Precision Wire Cut EDM Oil

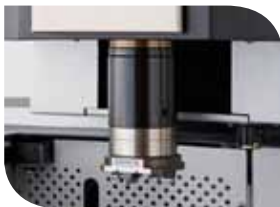
Linear High End Wire Cut EDM AP250L



Combination of linear motor drive system and a gantry structure has achieved great improvement of positioning and machining accuracy by taking full advantages of backlash free quick axis movement, while minimizing the deformation of the machine structure during axis movement. ECO Cut Oil achieves the highest combination of speed and accuracy.

High Precision Die Sinking EDM

Linear High End EDM AP1L | AP3L



Responding to the need for a higher level of machining accuracy from a larger machine, Sodick's AP1L/AP3L Premium offers solutions based on proven superiority in Micro machining.

Specification	AP250L
XYZ axis travel (mm)	250 x 150 x 120
U/V axis travel	35 x 35
Taper angle	±7°
Wire diameter (mm)	ø0.05 - 0.20*
Max. workpiece weight	80 kg
Max. workpiece dimensions (mm)	400 x 270 x 100
Machine tool dimensions (W x D x H) (mm)	2395 x 2692 x 2095

Specification	AP1L	AP3L
XYZ axis travel (mm)	200 x 120 x 200	300 x 250 x 250
Table dimensions (mm)	360 x 220	500 x 350
Worktank dimensions (mm)	503 x 349 x 250	760 x 538 x 260
Max. workpiece weight	25 kg	200 kg
Max. electrode weight	5 kg	5 kg
Machine tool dimensions (mm)	1360 x 1920 x 2030	1555 x 1945 x 1990

* = 0.03mm wire available as an option

Hole Drilling EDM

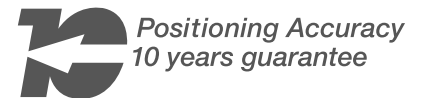
Sodick's K-series range of machines can produce very small wire EDM start holes quickly and efficiently, as well as other small diameter drill holes. The K-series line up features K1C and K3HN with a wide range of capabilities determined according to the application needs.

K Series Hole Drilling EDM K1C | K3HN



10 Year Guarantee

The linear motor-driven EDMs, eliminate the need for ball screws and the associated disadvantages. Use of the Linear Motor removes the deterioration in machining accuracy caused by worn ball screws throughout the machine life (more than 10 years). Sodick is so confident of the performance and accuracy of their machines over a 10 year period, that they are the only Manufacturer to offer a 10 year positioning accuracy guarantee on all Linear EDM Machines.



High-speed Milling

All the Sodick high-speed milling range, the "HS series", features linear motors. To compete successfully in today's global market, manufacturers are looking for milling solutions with minimum cycle times. The HS series satisfies the most demanding application requirements.

High-Speed Linear Machining Centre HS430L | HS650L | HS650L 5 axis



Specification	K1C	K3HN
X/Y/Z axis travel (mm)	200 x 300 x 300	300 x 400 x 300
W-Axis (Cutting axis in mm)	250	230
Table dimensions (mm)	250 x 350	400 x 450
Max. workpiece dimensions (mm)	250 x 350 x 300	400 x 450 x 300
Electrode diameter (mm)	0.25~3.0	0.25~3.0
Machine tool weight (kg)	550	850
Machine tool dimensions (W x D x H)	890 x 870 x 2015 mm	1425 x 1120 x 2080 mm

Specification	HS430L	HS650L
X/Y/Z axis (mm)	420 x 350 x 200	620 x 500 x 300
Machine table (W x D) (mm)	750 x 500	750 x 500
Maximum load on table (kg)	120	120
Spindle speed (min ⁻¹)	6000~40000	6000~40000
Max acceleration X/Y/Z axis (G)	>1	>1
Rapid feed rate (m/min)	36	36
Tool diameter (mm)	1500 x 1625 x 2105	1825 x 2956 x 2540

More Than 27,000 Linear Machines Produced

Today, Sodick has 4 production plants worldwide: Fukui Japan, Suzhou China, Xiamen China and the last but not the least, Bangkok Thailand. Sodick Thai factory has always been the main production plant of the company since its establishment in 1988. Most of the machines to Europe are from Thai factory where linear motors, ceramics, discharge units, NC units, PCBs and machine casting are in-house built.



Factory Thailand

Consumables You Can Trust

Sodick's Original Consumables

Customers throughout Europe are able to obtain genuine Sodick EDM consumable parts, the quality of which has been fully tested and assured in Japan, to obtain optimum productivity from Sodick equipment. It is delivered from a location in the end user's geographic area, with full technical support through Sodick Europe Ltd.



Sodick

Sodick Europe Ltd.
Rowley Drive, Baginton
Coventry, CV3 4FG
United Kingdom

create your future

Sodick Contact

Phone +44 (0) 24 7621 4314
email europa@sodick.eu.com
online www.sodick.org